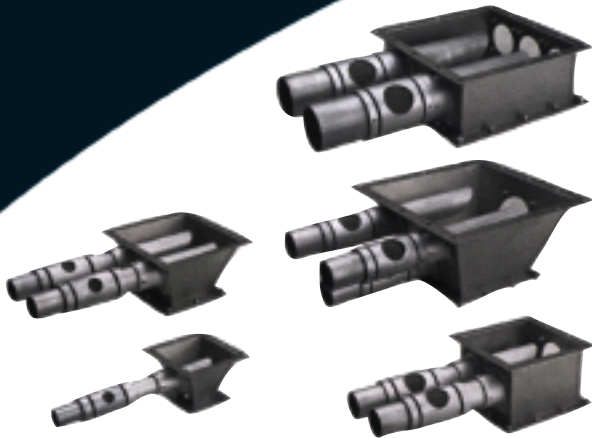




WHITLOCK-MATERIAL HANDLING

MTO AND MDT SERIES TAKE-OFF BOXES



MTO TAKE OFF BOXES

Modular take-off boxes from AEC are designed for free-flowing materials and provide durable construction in a simple, modular design. The MTO Series take-off boxes feature stainless steel construction with lightweight aluminum tube assemblies. The versatile modular design is compatible with a wide range of applications and allows for easy assembly and cleanout.

MTO take-off boxes are available in single or multiple line configurations. Models include complete clean-out type with tapered bottom, or box type, which provides various material line take-off configurations. All compartments have adjustable tubes or air/material balancing and a filter for air inlets.

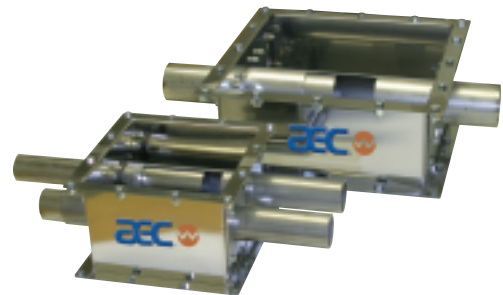
MDT dual tube models are designed for regrind and non free-flowing material, such as flakes or powders. This type of box should also be used when conveying any type of material over 200 equivalent feet.

MTO/MDT STANDARD FEATURES

- Stainless steel box
- Material viewport on body styles A, B, and C
- Available sizes: 16" (406 mm), 10" (254 mm), and 7" (178 mm) – square flanges (7" box is not available on MDT models)

MTO/MDT OPTIONAL FEATURES

- Material clean-out gate on bottom of box
- Blank plate on bottom of box
- Adapter plate to mate to 7" x 7" or 9" x 9 square flange drying hoppers
- Take-off tubes: 1.5", 2", 2.5", 3", 3.5", 4"



1100 E Woodfield Road
Schaumburg, IL 60173 USA
Tel. 847-273-7700 Fax 847-273-7804

www.aecinternet.com



HEAT & COOL



BLEND & RECLAIM



NELMOR/
GRANULATE



DOWNSTREAM
EXTRUSION



AUTOMATE



SYSTEMS
CONTRACTING

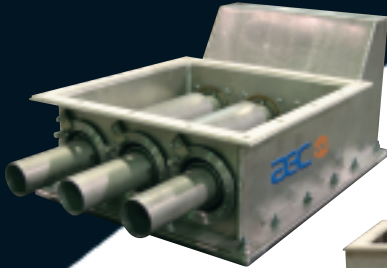


SERVICE



WHITLOCK-MATERIAL HANDLING

MTO AND MDT SERIES TAKE-OFF BOXES



FEVTO Series



EVTO Series



FCO Series

TAKE-OFF COMPARTMENTS

FCO Series fast clean-out vacuum take-off compartments meter free-flowing pellets into a vacuum conveying system.

FEVTO and EVTO filtered expandable and expandable vacuum take-off compartments are ideal for metering regrind and PVC, and for distances greater than 200 feet.

OPTIONS

- Material cleanout gate (FEVTO, EVTO models)
- Dry air conveying tube stub
- Flange adapters
- Drain gate (FEVTO, EVTO models)

STANDARD FEATURES

FCO Series

- Standard conveying with ambient air
- Mild or stainless steel construction
- 10" square flange
- Fast cleanout design
- Single position
- 1.25", 1.5", 2.0", 2.5", 3.0" tube size

FEVTO/EVTO Series

- Standard conveying with ambient air
- Aluminum construction
- 16" square mounting flange
- 3 tubes
- 1.5", 2.0", 2.25", 2.5" OD tube sizes
- Expandable up to nine tubes using EVTO sections



1100 E Woodfield Road
Schaumburg, IL 60173 USA
Tel. 847-273-7700 Fax 847-273-7804

